



**NEW: MultiLumen**



# PLANOX PRO

LUMINAIRES FOR MOIST/HUMID ENVIRONMENTS

# PLANOX PRO

Luminaires for moist/humid environments



reddot award 2018  
winner

## PROFESSIONAL. DIFFERENT.

Yes, it is different from the rest ... This sentence pertaining to the PLANOX ECO designed by RZB holds truer than ever when it comes to the newly developed PLANOX PRO moisture-proof luminaire. It is, however, much more than just that, with its highly efficient features and innovative housing!

The new design developed by RZB on the basis of an extrusion housing enabled a particularly slimline and flat design, together with the incorporation of flexible mounting brackets. As such, the time and effort needed to replace older luminaires with modern LED technology is minimal. Cables are easily and conveniently mounted on either side with turn lock fastener.

PLANOX PRO comes with five-pole – or optional seven-pole – through-wiring and is DC-enabled. Highly efficient LEDs produce homogeneous lighting. Particularly resistant and high-quality materials make this moisture-proof luminaire exceptionally robust. With its high protection class and high thermal load bearing capacity, it is designed for both indoor and outdoor applications. As it is manufactured without silicone, PLANOX PRO is suitable not just for widespread use in conventional applications, but also in the food- and beverage-processing industries.

## ADDITIONAL ADVANTAGES

- ⊕ **MultiLumen version:** 2 steps adjustable luminous flux (high lumen output equivalent to 2-lamp version; low lumen output equivalent to 1-lamp version)
- ⊕ 1:1 replacement for fluorescent lamps
- ⊕ Indirect light to illuminate the ceiling
- ⊕ ▽ Luminaires with limited surface temperature in accordance with DIN EN 60598-2-24 for use in environments in which a deposit of conductive dust on the luminaire can be expected
- ⊕ Operating range: -30°C to +50°C
- ⊕ Operating range (.76 DALI versions): -25°C to +50°C
- ⊕ High degree of protection IP 66
- ⊕ Impact protection: IK08
- ⊕ Housing and end caps made of shockproof polycarbonate (PC)
- ⊕ Mould cast diffusers as inner prisms, UV resistant and provide homogenous light distribution
- ⊕ Flexible installation through sliding mounting bracket. Ideal for luminaire replacement
- ⊕ Through-wiring as standard for further luminaires (On/Off: 5 x 1,5 mm<sup>2</sup>; DALI: 7 x 1,5 mm<sup>2</sup>)
- ⊕ Cable installation on both sides through turn lock fastener
- ⊕ Suitable for use in the food and drink industry
- ⊕ DALI converter is compatible with DC, suitable for central emergency power supply purposes









# PLANOX PRO

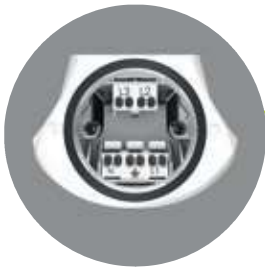
Technology



Housing and end caps made of shockproof polycarbonate (PC)



Can be opened and closed without tools using a turn lock fastener, cable screw fitting as standard



Simple connection by means of terminal with push-on connector

On-board through-wiring as standard, (on/off: 5 x 1,5mm<sup>2</sup> | DALI: 7 x 1,5mm<sup>2</sup>).



### MultiLumen version:

The user can choose from two different luminous flux levels (L=Low/H=High).

Thanks to the switch in the luminaire the lumen output can easily be changed even after installation.

The initial setting is "H" (high lumen).





Also available as an emergency luminaire in accordance with EN 60598-2-22

Standard automatic self-test

Wide luminaire spacing for escape route illumination



Suitable for use in the food and drink industry



Luminaires with limited surface temperature in accordance with DIN EN 60598-2-24 for use in environments in which a deposit of conductive dust on the luminaire can be expected

Flexible installation through sliding mounting bracket  
Ideal for luminaire replacement



Homogeneous light output through satin-finished, internal prismatic diffuser

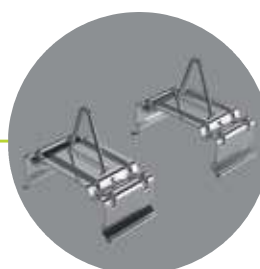
# PLANOX PRO

Everything at a glance



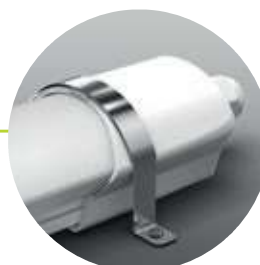
In 3 lengths and 5 wattages

Included in scope of delivery:

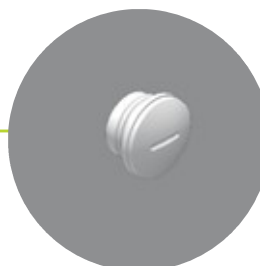


Ceiling mounting bracket and triangular bracket for pendant mounting

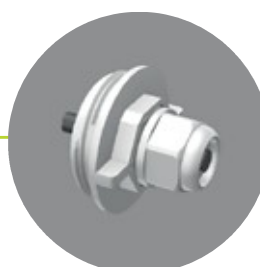
Accessories must be ordered separately:



Mounting brackets made of stainless steel (theft protection) for ceiling and wall mounting

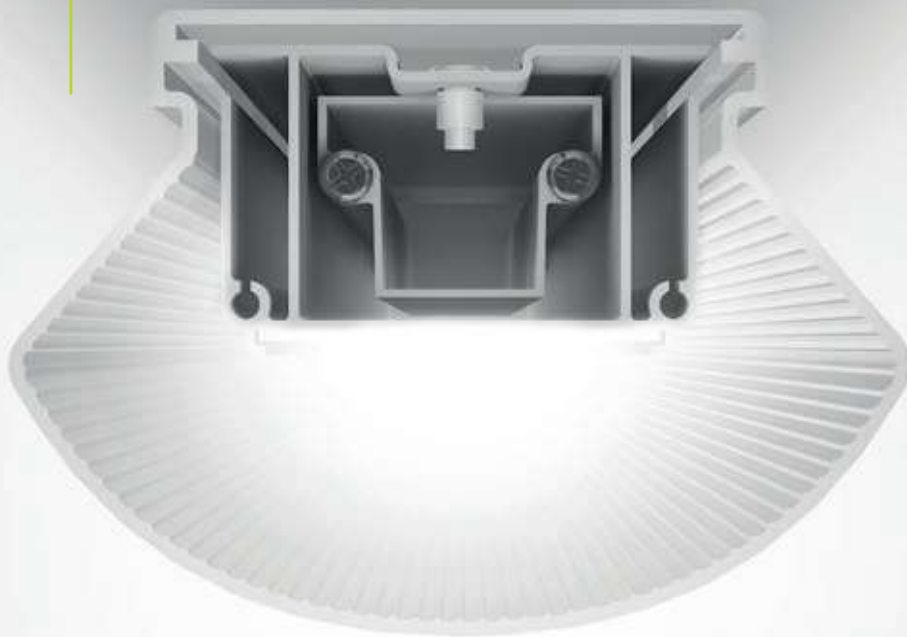


End piece for turn lock fastener



Turn lock fastening

Indirect light to illuminate the ceiling  
Homogeneous illumination through satin finish diffuser



## PHOTOMETRICS

- ⊕ Luminous efficiency up to 137 lm/W
- ⊕ LED luminous flux up to 7,150 lm
- ⊕ Colour temperature 4,000 K
- ⊕ Colour rendering index Ra 80
- ⊕ Symmetrical light distribution
- ⊕ LED rated life 50,000 h (L80, B10)
- ⊕ Good colour consistency within 3-steps MacAdam (3 SDCM)
- ⊕ 1:1 replacement for fluorescent lamps

# PLANOX PRO

## Product overview



### Ceiling and wall luminaires | Planox PRO

Type of Protection: **IP 66**  
 Protection Class: II  
 Impact Protection: IK08

Side panels: plastic, white polycarbonate, shockproof. Diffuser: plastic (polycarbonate), opal, shockproof. Converter encapsulated, integrated and permanently connected to the diffuser and side panel. Cable screw fittings for convenient wiring. Turn lock fastener on both sides for easy installation. Luminaire with integrated through-wiring for lining up further luminaires. Ceiling mounting stainless steel brackets and triangular brackets for pendant mounting included in the scope of delivery.

▽ Luminaires with limited surface temperature in accordance with DIN EN 60598-2-24 for use in environments in which a deposit of conductive dust on the luminaire can be expected.

Available colour: 2 = white

**MultiLumen version:** 2 steps adjustable luminous flux. Factory-set to highest luminous flux.



### Comparison LED vs. conventional lamps

#### LED 14 W ≈

2 x 14 W T16 (36 W Psys)  
 2 x 18 W T26 (52 W Psys)

#### LED 21 W ≈

1 x 36 W T26 (43 W Psys)  
 1 x 54 W T16 (58 W Psys)

#### LED 27 W ≈

1 x 58 W T26 (67 W Psys)  
 1 x 80 W T16 (86 W Psys)

#### LED 35 W ≈

2 x 36 W T26 (86 W Psys)  
 2 x 54 W T16 (115 W Psys)

#### LED 48 W ≈

2 x 58 W T26 (134 W Psys)  
 2 x 80 W T16 (172 W Psys)

Reference number	Dimensions	Lamp	Light colour	Luminous flux	System power	dim-able		Price Category 11
<b>Ceiling and wall luminaires</b>								
<b>Length L 750 mm</b>								
451204.002	L 750, B 88, H 63	LED	840	2000 lm	14 W	on/off	✓	
451204.002.76	L 750, B 88, H 63	LED	840	2000 lm	14 W	DALI		
<b>Length L 1350 mm</b>								
451220.002 *	L 1350, B 88, H 63	LED	840	3200/5200 lm	21/35 W	on/off		
451206.002.76	L 1350, B 88, H 63	LED	840	5200 lm	35 W	DALI		
<b>Length L 1650 mm</b>								
451221.002 .Q*	L 1650, B 88, H 63	LED	840	4100/7150 lm	27/48 W	on/off		
451208.002.76	L 1650, B 88, H 63	LED	840	7150 lm	48 W	DALI		

\* MultiLumen version



#### End piece for turn lock fastener with D 25 mm

982394.002 D 25, H 13

Price Category 11



#### Turn lock fastening

982396.002 D 56, H 50

Price Category 11



#### Mounting brackets made of stainless steel (theft protection) for ceiling and wall mounting

982395.000 L 130, B 13, H 61

Price Category 11



### Emergency luminaires | Planox PRO

Type of Protection: **IP 66**  
Protection Class: II

#### For escape route illumination

Side panels: plastic, white polycarbonate, shockproof. Diffuser: plastic (polycarbonate), opal. Converter encapsulated, integrated and permanently connected to the diffuser and side panel. Cable screw fittings for convenient wiring. Turn lock fastener on both sides for easy installation. Luminaire with integrated through-wiring for lining up further luminaires. Ceiling mounting stainless steel brackets and triangular brackets for pendant mounting included in the scope of delivery.

▽ Luminaires with limited surface temperature in accordance with DIN EN 60598-2-24 for use in environments in which a deposit of conductive dust on the luminaire can be expected.

Available colour: 2 = white



### Luminaires for central battery system

Voltage type: AC/DC  
Ballast: EB

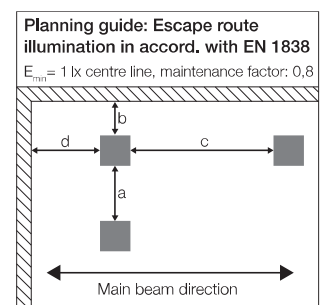
Reference number	Dimensions	Light colour	Luminaire flux Mains/Emergency	System power	Monitoring
<b>Luminaires for central battery system</b>					
					<b>Price Category 24</b>
672318.002	L 750, B 88, H 63	840	1900 / 1900 lm	15 W	Standard
672319.002	L 1350, B 88, H 63	840	4900 / 4900 lm	38 W	Standard
672320.002	L 1650, B 88, H 63	840	7000 / 7000 lm	54 W	Standard



<b>672318.002</b>					
Luminous flux emergency: 1900 lm					
Following values are indicated in m					
h	a	b	c	d	
2,5	14,9	6,2	17,9	7,1	
3,0	16,3	6,7	19,1	7,6	
3,5	17,5	7,2	20,2	8,0	
4,0	18,6	7,6	21,2	8,4	

<b>672319.002</b>					
Luminous flux emergency: 4900 lm					
Following values are indicated in m					
h	a	b	c	d	
2,5	18,9	7,9	24,1	9,7	
3,0	20,8	8,7	25,8	10,3	
3,5	22,5	9,4	27,3	10,9	
4,0	24,0	10,0	28,7	11,5	

<b>672320.002</b>					
Luminous flux emergency: 7000 lm					
Following values are indicated in m					
h	a	b	c	d	
2,5	20,7	8,7	26,9	10,8	
3,0	22,8	9,6	28,8	11,5	
3,5	24,6	10,3	30,5	12,2	
4,0	26,4	11,0	32,1	12,8	





## FURTHER LUMINAIRES, MATCHING THIS SERIES:



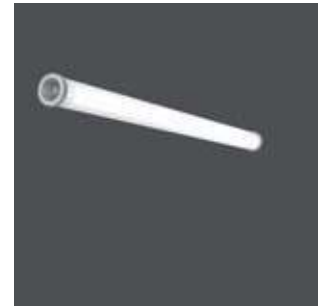
⊕ Planox



⊕ Planox



⊕ Planox ECO



⊕ Planox Tube

## HIGHEST PRODUCT AND CONSULTING QUALITY

### ⊕ RELIABILITY

We are your reliable partner. From the first idea to the implementation and far beyond, we accompany your project. Personal, passionate and individual. Thanks to our excellent expertise, top product quality and services such as lighting design, economic efficiency analysis and commissioning, we meet the high demands of all parties involved in the planning process.

- ✓ availability of BIM files
- ✓ easy and quick installation
- ✓ quality and long warranty

### ⊕ WARRANTY

RZB grants 5 years warranty on LED luminaires and 2 years warranty on emergency luminaires!

The creation of high quality lighting solutions is our passion. Our products are developed and manufactured with the utmost care.

In addition to SMART TECHNOLOGY and EXCELLENT DESIGN, we are dedicated to manufacture luminaires of highest quality throughout the entire value chain through to After Sales Service.

Because of this, we confidently grant you a 5 years warranty on LED luminaires and 2 years warranty on emergency luminaires with effect of the date of invoice without prior registration of your project.

Warranty terms to be found under

[rzb.de/en/service/led-luminaire-warranty](http://rzb.de/en/service/led-luminaire-warranty)

## RZB - FOR A TANGIBLE ADDED VALUE.



**RZB**  
**Rudolf Zimmermann,**  
**Bamberg GmbH**

Rheinstr. 16  
96052 Bamberg  
Germany

Phone +49 951/79 09-374  
Fax +49 951/79 09-212

[www.rzb-lighting.com](http://www.rzb-lighting.com)  
[export@rzb.eu](mailto:export@rzb.eu)

